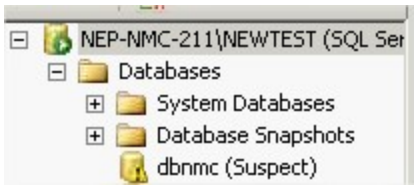


## How To Repair A Suspect Database In MS SQL

### Review details problem

You have a database in MS SQL that is tagged as (suspect) and you are unable to connect to the database.



### Possible Causes

- The database could have become corrupted.
- There is not enough space available for the SQL Server to recover the database during startup.
- The database cannot be opened due to inaccessible files or insufficient memory or disk space.
- The database files are being held by operating system, third party backup software etc.
- There was an unexpected SQL Server Shutdown, power failure or a hardware failure.

### Solution(s)

#### [Stop IIS](#)

Stop newtest server integrity (21X and 22X) and newtest server (21X)

**Create a ticket through ip-label helpdesk in thsi critical case.**

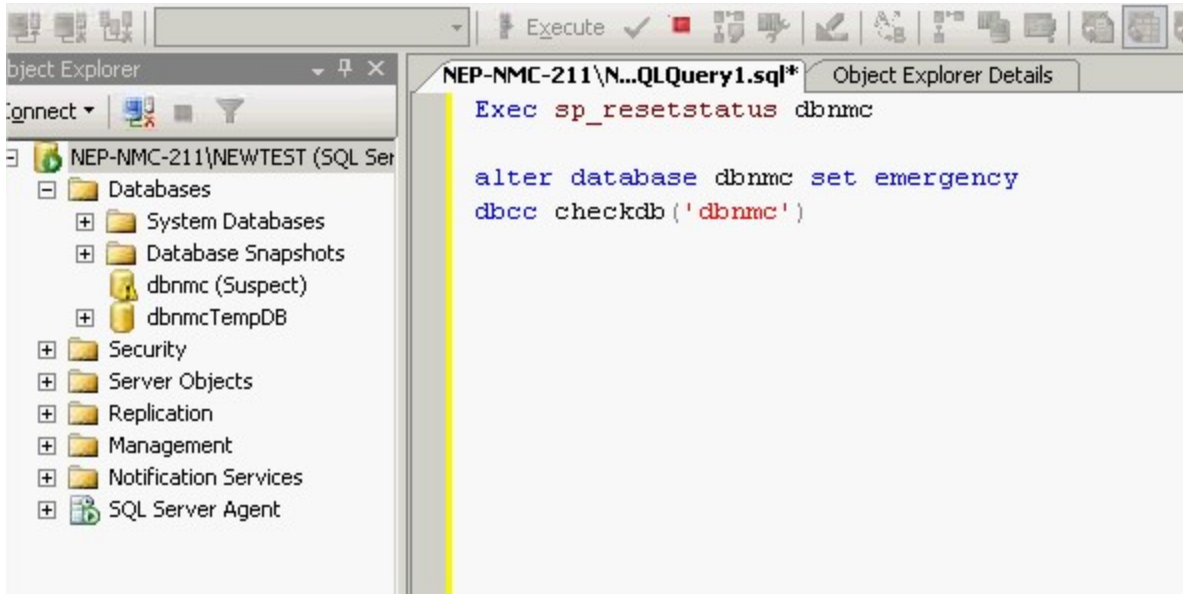
These steps require you to have Microsoft SQL Server Management Studio installed on your computer.

Open Microsoft SQL Server Management Studio and connect to your database

Click the New Query button

Paste the following SQL scripts into your New Query page replacing [YourDatabase] with the name of your database.

reference to undefined name 'syntax' Une exception de type  
'MindTouch.Deki.Script.Runtime.DekiScriptUndefinedNameException' a été levée. (click for details)



### [Check Progress](#)

#### **Check the results (or attach the result to your Newtest ticket)**

reference to undefined name 'syntax' Une exception de type 'MindTouch.Deki.Script.Runtime.DekiScriptUndefinedNameException' a été levée. (click for details)

#### **Check the results (or attach the result to your Newtest ticket)**

reference to undefined name 'syntax' Une exception de type 'MindTouch.Deki.Script.Runtime.DekiScriptUndefinedNameException' a été levée. (click for details)  
Your database should no longer be tagged as (suspect) and you should be able to access it.

### See also