

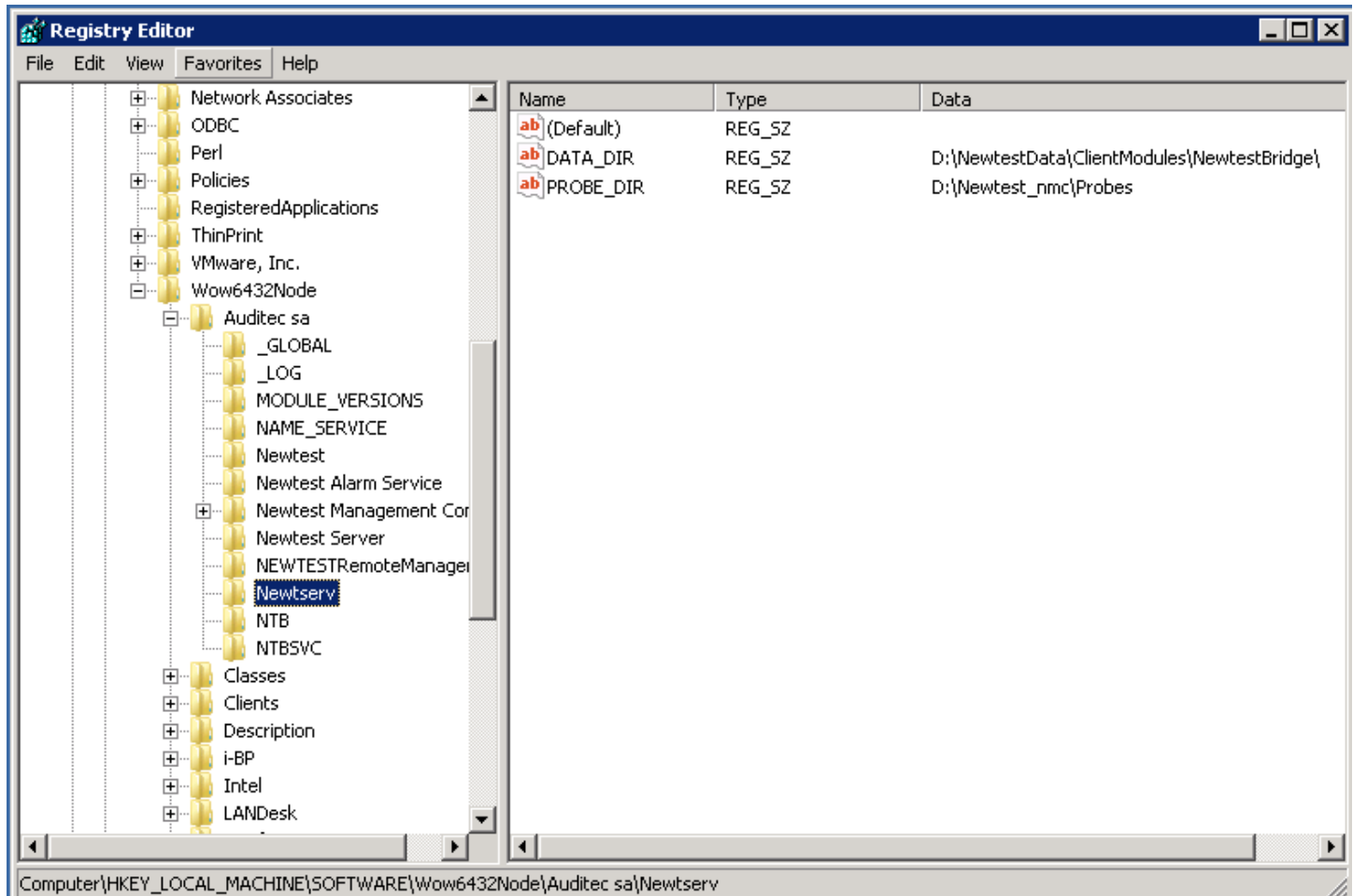
Using ROBOTBATCHSETTING.EXE to configure probes

This Robotbatchsetting.exe tool is integrated with NEP solution on your NMC server. The default path is :

`C:\Program Files (x86)\ip-label\Newtest\ClientModules\Exe\`

For an NEP V2.2.x, you will first need to define the following registry keys to use this tool :

```
[HKEY_LOCAL_MACHINE\SOFTWARE\Wow6432Node\AUDITEC SA\Newtserv]
"DATA_DIR"="D:\NewtestData\NewtestBridge\"
"PROBE_DIR"="D:\NewtestData\NewtestBridge\Probes\"
```



How to use this tool

Please note that you will need to execute this tool in "Run as administrator" mode

You may find the utilities of this tool by using the following command:

`RobotBatchSetting.exe /?`

1. To define a secondary server for probes

In the following code :

SecondaryServer\$: the key for a secondary server. "\$" should be a digital value starting from 0. For a first SecondaryServer, "\$" should be 0 which gives SecondaryServer0

XXX-XXXXXX: the company key of the secondary server

YYY-YYY-YYY-YYY: the software key of the secondary server

STCPIP:<ServerName1>: Replace <ServerName1> by IP address or server name of the secondary server. Remove "STCPIP" if you are using standard TCPIP protocol

port: connection port to the secondary server

-do: provide the real action. Without this argument, only the command syntax will be checked.

-update: provide an immediate update notification to the selected robot

-restart: force a robot reboot to the selected robot

```
RobotBatchSetting.exe -robot <robot_name> -set [NEWTEST_PROTOCOL]SecondaryServer1=XXX-XXXXXX,YYY-YYY-YYY-YYY,STCPIP:<ServerName1>,<port>,,,,-1,-1 -update -do
```

```
RobotBatchSetting.exe -robot <robot_name> -swap <server_name> -update -restart -do
```

```
RobotBatchSetting.exe -robot <robot_name> -set [NEWTEST_PROTOCOL]SecondaryServer1 -update -do
```

To select all existing robots, replace <robot_name> by *.

```
RobotBatchSetting.exe -robot *
```

Here are two examples :

```
c:\Program Files (x86)\ip-label\Newtest\ClientModules\Exe>ROBOTBATCHSETTING.EXE
```

```
-robot nwt100 -set [NEWTEST_PROTOCOL]SecondaryServer1
```

```
08:47:34.458 START LOG: ROBOTBATCHSETTING-7.6.0 R1 PID: 5176
```

```
08:47:34.458 LOADED MODULE: ROBOTBATCHSETTING-7.6.0 R1
```

```
Robot batch setting utilities 7.6.0 R1
```

```
In D:\NewtestData\ClientModules\NewtestBridge\Probes\
```

```
[Not] remove 'D:\NewtestData\ClientModules\NewtestBridge\Probes\NWT100\NEWTEST.INI'
```

```
[NEWTEST_PROTOCOL]SecondaryServer1='200-004390,220-000-000-002,STCPIP:ServerName1,48181,,,,TUIMIVTQIT
```

```
c:\Program Files (x86)\ip-label\Newtest\ClientModules\Exe>ROBOTBATCHSETTING.EXE
```

```
-robot nwt100 -swap BIWPNEP000
```

```
08:48:21.227 START LOG: ROBOTBATCHSETTING-7.6.0 R1 PID: 5812
```

08:48:21.227 LOADED MODULE: ROBOTBATCHSETTING-7.6.0 R1

Robot batch setting utilities 7.6.0 R1

In D:\NewtestData\ClientModules\NewtestBridge\Probes\

[Not] set primary

'200-004390,220-000-000-001,STCPIP:ServerName1,8181,,,,NROCQJJRIAHXPAFLQUPBFMODGXGM,-1,-1' ->

'200-004390,300-000-000-001,STCPIP:ServerName2,47100,,,,NVPPEYPJMAASAPBFHJDUCRBDRXML,-1,-1'

[Not] set secondary

'200-004390,300-000-000-001,STCPIP:ServerName2,47100,,,,NVPPEYPJMAASAPBFHJDUCRBDRXML,-1,-1' ->

'200-004390,220-000-000-001,STCPIP:ServerName1,48181,,,,NROCQJJRIAHXPAFLQUPBFMODGXGM,-1,-1' [2]

2. To add an extra key

In order to add an extra key to all Newtest.ini files of all existing probes, you may use the following code :

```
RobotBatchSetting.exe -robot * -set [SECTION]KEY=VALUE -do
```

Here is an example of adding the NO_PCID option to all Newtest.ini files :

```
RobotBatchSetting.exe -robot * -set [SECTION]KEY=VALUE -update -do
```

3. Remotely install a fix patch

You may use the following command to install fix patch from NMC server to one or several of your robots.

```
RobotBatchSetting.exe -robot <Robot_Name> -patch <File_path> -setup -reboot -do
```

The patch will be installed after the next reboot.

If you wish to apply the patch immediately, you may add "-update" :

```
RobotBatchSetting.exe -robot <Robot_Name> -patch <File_path> -setup -reboot -update -do
```

Replace <Robot_Name> by * could apply patch to all robots.

See also

[Newtest.INI template](#)

[Newtest.ini parameters](#)