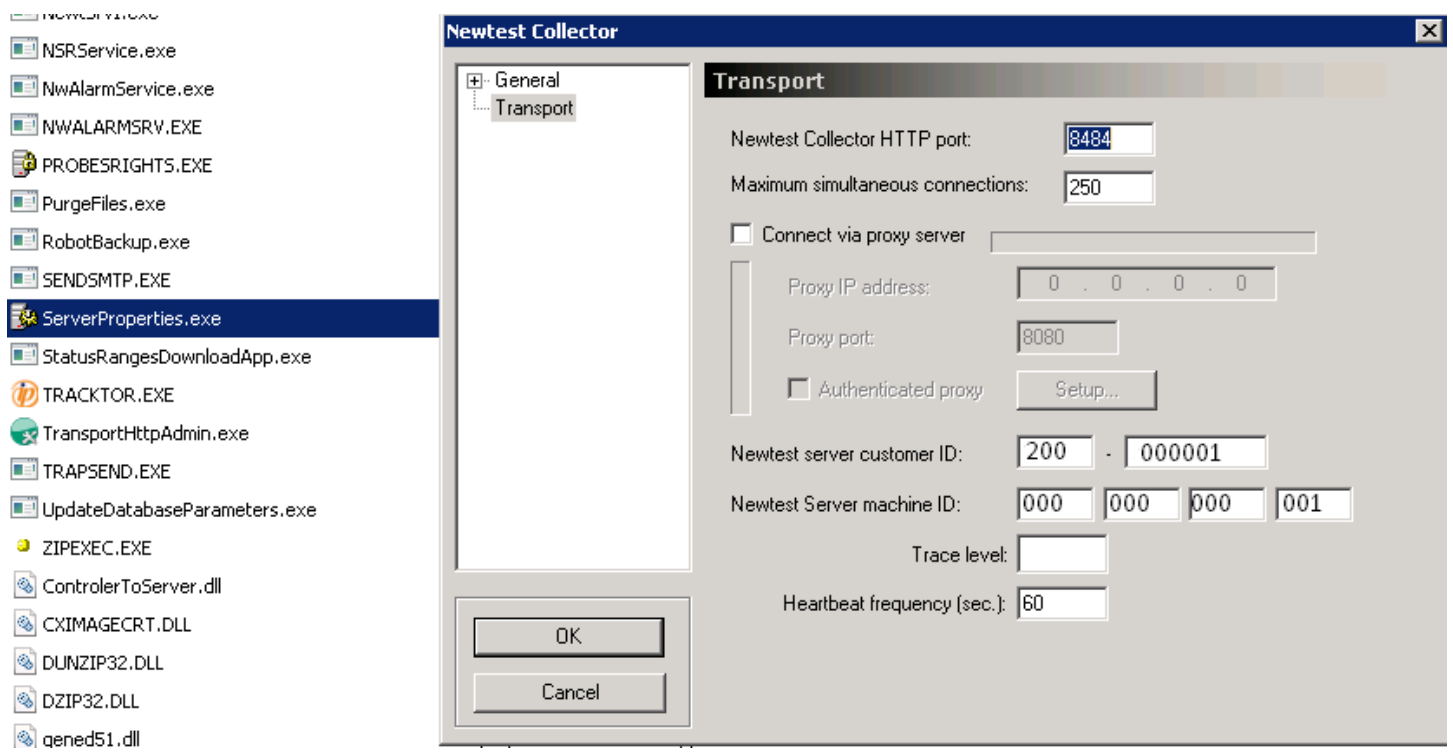


### Step 1. Configure your collector with ServerProperties.exe tool

You need to use the tool **ServerProperties.exe** on Collector's machine to configure it.



### Step 2. Change IIS settings

You will need to set Identity to "Local System" for "Newtest" Application pool in IIS settings.

IIS -> Application Pools -> Newtest -> Advanced Settings... -> Process Model -> Identity = LocalSystem

